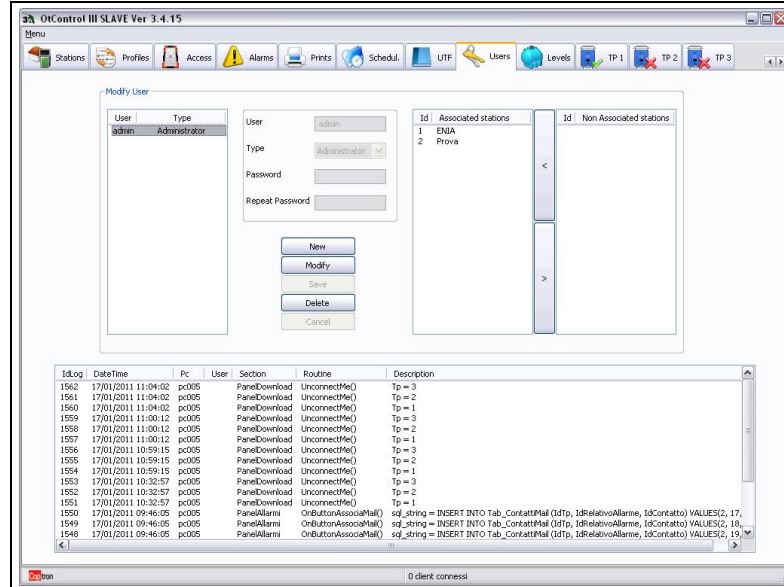
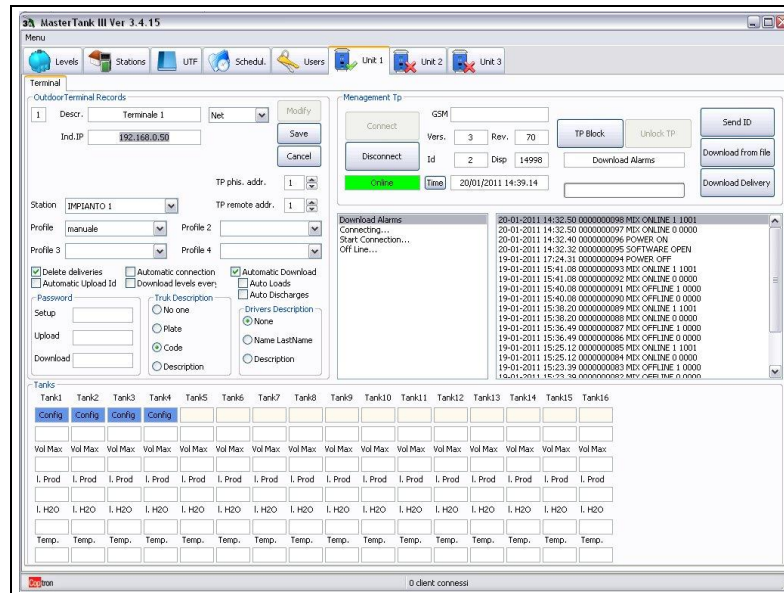


**Users**



Managing users with access to software

**Management control unit**



Management control unit registry

Management connection with the control unit

Log connections and alarms

**Codes**

ATS03309/SSV	Software MasterTank Tre v. Supervisore
ATS03309/SFL	Software MasterTank Tre v. Client Supervisore
ATS03309/SFL	Software MasterTank Tre v. Server Full
ATS03309/CFL	Software MasterTank Tre v. Client Full
ATS03309/SLT	Software MasterTank Tre v. Server Lite
ATS03309/CLT	Software MasterTank Tre v. Client Lite

**Necessary requirements Server for the version SUPERVISOR and SERVER**

Model Pc Desk-Top o MiniTower  
 CPU Intel Xeon E3  
 Hard Disk 100 GB  
 RAM memory 4 GB  
 Screen resolution 1024x768  
 Interface 1 LAN, 2 USB  
 Operating System Win 2003 Server

**Necessary requirements Management Pc**

Model Pc Desk-Top o MiniTower  
 PCU Intel i3  
 Hard Disk 100 GB  
 RAM memory 4 GB  
 Screen resolution 1024x768  
 Interface 1 LAN  
 Operating system Windows 7/810

Note: you can set individual configurations based on customer needs.

Specification subject to change without notice

**Level management software  
 MASTERTANK TRE series**



MasterTank III software allows you to centralize and process data from the level control unit.

It is available in Supervisor, Full Server, Server Lite, and for each variant in the Client (only for data display):

FUNCTION	SUPERVISORE	SERVER FULL	SERVER LITE
Login password-protected	X	X	X
Level management	X	X	X
Stations management	X	X	X
UTF management	X	X	X
Scheduling level request, closing connection and activation of external programs	X	X	X
Collect database	X	-	-
Management software utilities	X	X	X
Tank management	X	X	X

In detail the Server versions allow you to manage:

Server Full Version	Server Lite Version
250 level control units 256 level gauges	4 level control units 32 level gauges

Usable with various DB platforms including the most popular:



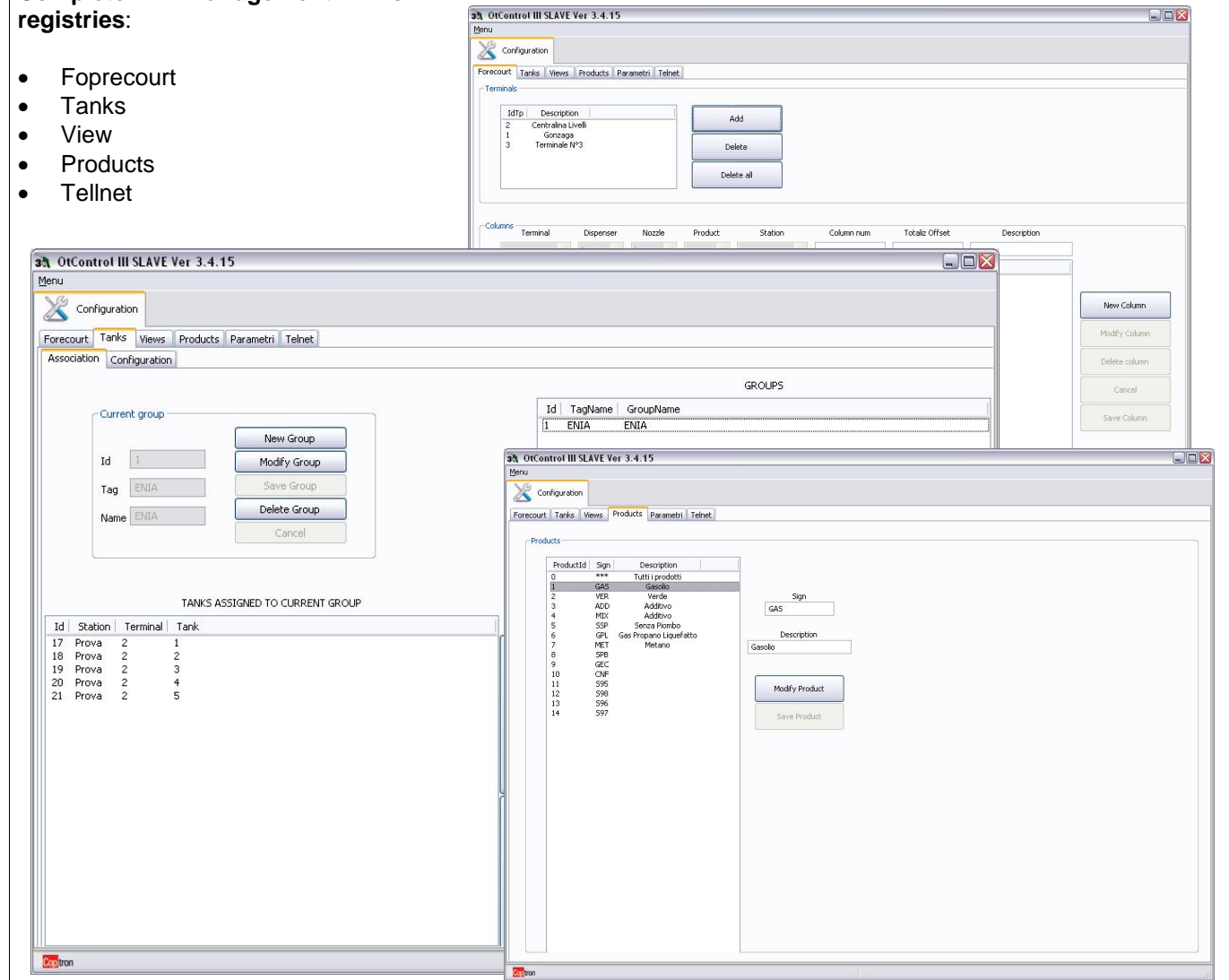
**Differentiated management of login:**

- User type
- Configurazion type
- Station type

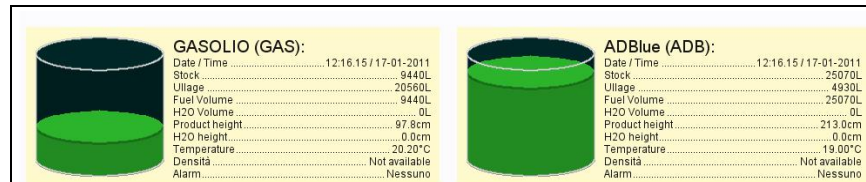


**Complete management of registries:**

- Foprecourt
- Tanks
- View
- Products
- Tellnet



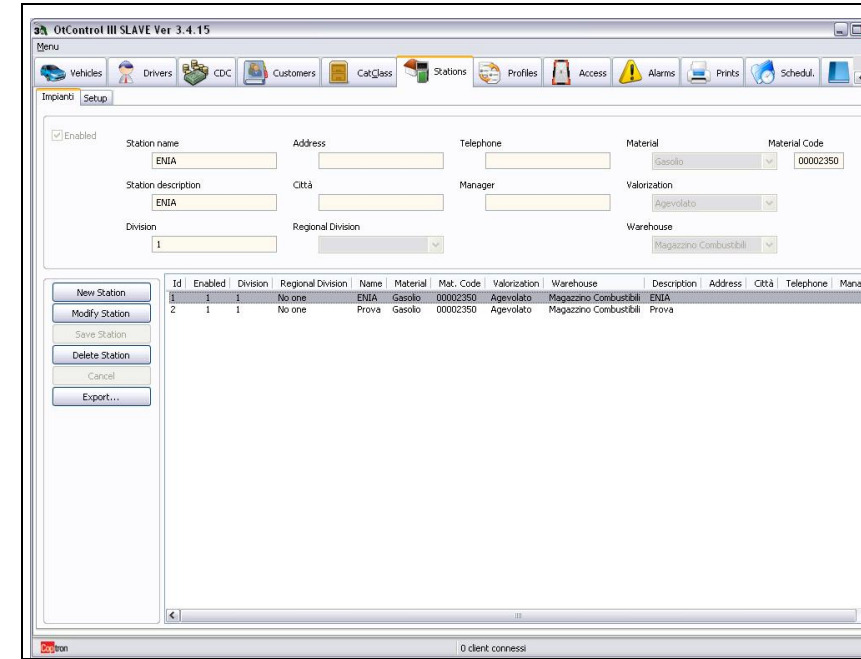
**Levels**



Viewing levels for group (one form for each group)

Viewing historical

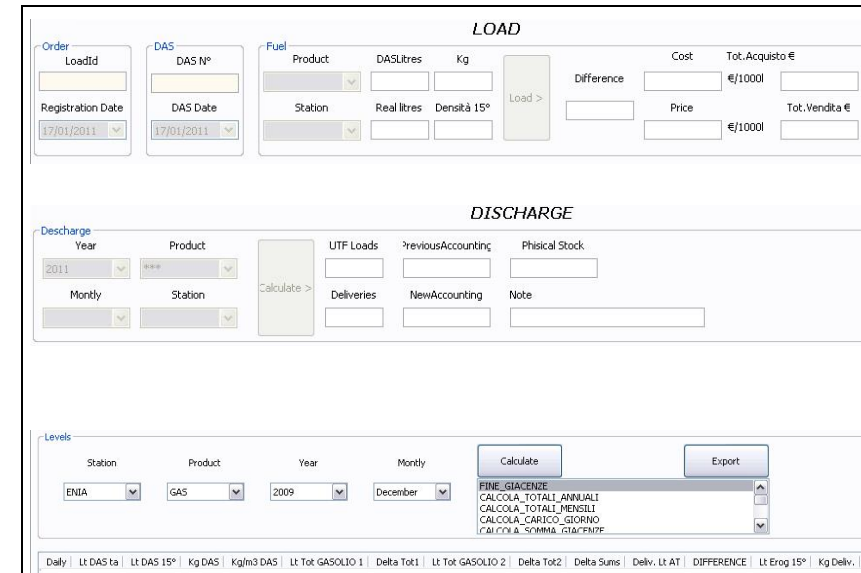
**Stations**



Defining the system data

Management the Materials, Divisions, Warehouses and Valorizations

**UTF**



Manual or automatic loading via meter metrologically approved

Automatic calculation of density at 15° through table B53 and automation calculation expansion coefficient through table B54

Automatic calculation discharge with control presence delivery data of all terminals

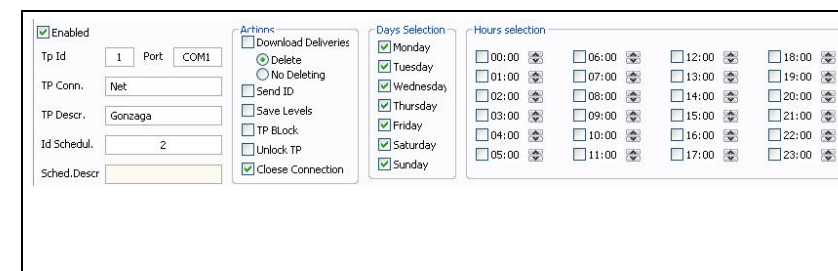
Managing temperature for each delivery at presence level probes

Customizable printing UTF register

Calculate the stock

The check reconciliation makes the difference between the data and the provision of day-level data and load. Control of the inconsistencies in auto mode can be enabled by setting a tolerance level in liters. The event of "out of tolerance", if enabled, is considered a warning and as such is maintained in the relevant section of the program.

**Scheduler**



Managing the scheduling of events for the tanks, such as unloading delivery, sending the ID, the request levels and closed the connection

Managing the scheduling of events for the activation of external programs